

PLUG: WTAV 20 PD9 SYL
 RECEPTACLE: WTAX 20 SAD9 SYL
 XXXX XX XXXX XXX

PLUG

RECEPTACLE

SERIES	
WTAV Plug, straight, no mounting ears	WTAX Receptacle, straight, no mounting ears WTAX Receptacle, right angle, no mounting ears

SIZE	
XX Number of contacts (10, 14, 20, 24, 26, 30, 36, 40, 44, 50, 54, 56, 60, 66, or 70)	XX Number of contacts (10, 14, 20, 24, 26, 30, 36, 40, 44, 50, 54, 56, 60, 66, or 70)

CONTACTS

- Pin or socket contacts can be used in either plug or receptacle.
- When pin contacts are used, standard hardware orientation places the female hardware next to the #1 pin contact.
- When socket contacts are used, standard hardware orientation places the male hardware next to the #1 socket contact.

TYPE CONTACTS/TERMINATIONS:		TYPE CONTACTS/TERMINATIONS:	
PC Pin, straight, solder cup (.035" I.D.)	SAC Socket, straight, solder cup (.035" I.D.)	SAD7 Socket, straight, dip solder, .109" x .027" dia	SAD9 Socket, straight, dip solder, .140" x .027" dia
PD7 Pin, straight, dip solder, .109" x .027" dia	SAD7 Socket, straight, dip solder, .109" x .027" dia	SAD11 Socket, straight, dip solder, .172" x .027" dia	SAF3 Socket, straight, flex circuit, .050"
PD9 Pin, straight, dip solder, .140" x .027" dia	SAD9 Socket, straight, dip solder, .140" x .027" dia	SAF6 Socket, straight, flex circuit, .093"	SAF9 Socket, straight, flex circuit, .140"
PD11 Pin, straight, dip solder, .172" x .027" dia	SAD11 Socket, straight, dip solder, .172" x .027" dia	SAG7 Socket, straight, dip solder, .109" x .018" dia	SAG9 Socket, straight, dip solder, .140" x .018" dia
PF3 Pin, straight, flex circuit, .050"	SAF3 Socket, straight, flex circuit, .050"	SAG11 Socket, straight, dip solder, .172" x .018" dia	SAP Socket, straight, pin termination, .150" (connector saver)
PF6 Pin, straight, flex circuit, .093"	SAF6 Socket, straight, flex circuit, .093"	SAW24 Socket, straight, wire wrap [®] , .375"	SAW40 Socket, straight, wire wrap [®] , .625"
PF8 Pin, straight, flex circuit, .125"	SAF9 Socket, straight, flex circuit, .140"	SOR7 Socket, right angle, dip solder, .109" x .025" dia	SOR9 Socket, right angle, dip solder, .140" x .025" dia
PW34 Pin, straight, wire wrap [®] , .531"	SAG7 Socket, straight, dip solder, .109" x .018" dia	SOR11 Socket, right angle, dip solder, .172" x .025" dia	
PW40 Pin, straight, wire wrap [®] , .625"	SAG9 Socket, straight, dip solder, .140" x .018" dia		
	SAG11 Socket, straight, dip solder, .172" x .018" dia		
	SAP Socket, straight, pin termination, .150" (connector saver)		
	SAW24 Socket, straight, wire wrap [®] , .375"		
	SAW40 Socket, straight, wire wrap [®] , .625"		
	SOR7 Socket, right angle, dip solder, .109" x .025" dia		
	SOR9 Socket, right angle, dip solder, .140" x .025" dia		
	SOR11 Socket, right angle, dip solder, .172" x .025" dia		

HARDWARE

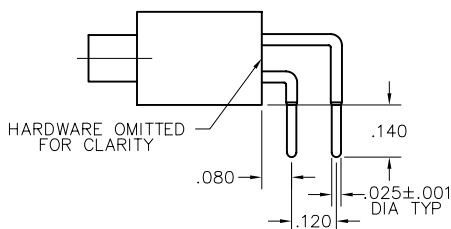
- Jacket hardware determines image of connector. Must specify image with guide set hardware.
- Plug facial seal gaskets and hoods; order separately or add "Q" in part number. Example: WTAV10PD9QJ. See "Gaskets" and "Hoods" in Accessories section for instructions.
- Fixed jackset, long (JL) includes jackscrew or jackscrew, #2-56 nut, #2 flat washer & #2 lockwasher

SY Guide set	SY Guide set
SY-# Guide set, polarized	SY-# Guide set, polarized
SYL Guide set, long	SYL Guide set, long
SYL-# Guide set, long, polarized	SYL-# Guide set, long, polarized
J Fixed jackset	JT Turning jackset, .500"
JL Fixed jackset, long	JTA Turning jackset, .200"
	JTB Hex turning jackset, .200"
	JTC Hex turning jackset, .500"
	JTL Turning jackset, long, .700"

OPTIONS

- Option Codes: Add to the end of the part number. Example: WTAV10PD9J-D01. Call factory for additional codes.
- 433 Polarizing pin installed in contact position noted by dash number. See "Polarization" in Accessories section.
- 444 Contact position noted by dash number is left open (to mate with -443). See "Polarization" in Accessories section.
- B82 Termination face sealed against conformal coating
- D01 Pretinned contact terminations (except solder cups, wire wraps[®] and flex contacts) with 63/37 or 60/40 solder.
- P39 Pretinned contact terminations (except solder cups, wire wraps[®] and flex contacts) with SAC305 solder (lead free).
- D54 Combine -B82 & -D01 options
- G69 Solder cups fixed in an outward orientation (otherwise contacts will rotate)

= Option not RoHS compliant



CONTACT OPTION: SOR9